

DIGITAL LEVEL RL series



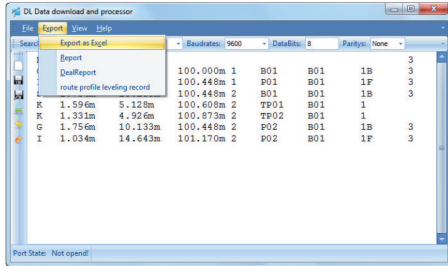
- MINIMIZE HUMAN ERRORS, NO MORE MISREADING
- AVERAGING MODE FOR MORE ACCURATE RESULTS
- SHORTEN THE MEASURING TIME BY A HALF
- ABUNDANT SURVEYING SOFTWARE SUPPORT, AUTOMATIC ERROR COMPENSATION
- INTERNAL STORAGE OR SD CARD MEMORY OPTIONAL, PAPERLESS WORKING

ROBUST

Key Features

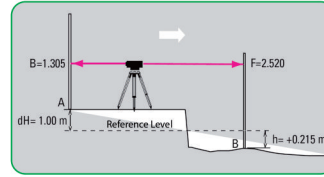


Extend the memory with a micro SD card, plus the mini-USB, making the data storage and transfer most suitable for work.

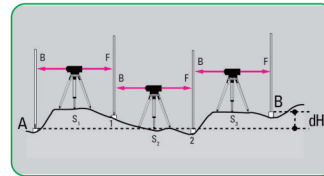


With RUIDE RL series, data can be downloaded to your computer via USB interface. It enables a smooth data transfer to Microsoft Excel.

Onboard software facilitate your job



This function calculates the height difference between points. Enter your benchmark, measure your backsight and then your various targets (foresights).



Enter your starting benchmark, measure your backsights, intermediate sights and foresights until you have reached your final point.

Specification

	RL-07	RL15
Height accuracy (standard deviation for 1km double run leveling)	Digital reading	0.7mm
	Optic reading	2.0mm
Distance accuracy	Digital reading	$D \leq 10m: 10mm; D > 10m: D \times 0.001$
Distance range	Digital reading	1.8m~105.0m
Minimum display	Height	0.01mm/0.1mm
	Distance	0.1cm/1cm
Measuring time		<3 second
Telescope	Magnification	32×
	Resolving power	3"
	Field of view	1° 20'
	Multi-constant	100
	Add-constant	0
Compensator	Type	magnetic-damped
	Range	±12'
	Accuracy	0.30" /1'
Data storage	Storage	16MB
	Point name	Increasing/decreasing/ user-define
	Connection	mini-USB/micro SD card
Circular vial accuracy		8'/2mm
Auto power off		5 minutes OFF
Horizontal circle	Graduation	1°
Display	LCD display of 160*64 dpi with illumination	LCD display of 128*32 dpi with illumination
Water & Dust Proof		IP54
Working temperature		-20°C ~50°C
Dimension		230mm(L)×150mm(W)×210mm(H)
Weight		2.5kg



ADVANCED SURVEYING INSTRUMENTS (INDIA) PVT. LTD.
 Corp. Off.: H-10/103, 1st Floor, Express Arcade, Near P. P. Trade Center,
 Netaji Subhash Place, Pitampura, New Delhi - 110 034, INDIA
 Mobile : +91-9910697973, 9643126789 Tel.: +91-11-47014143
 Email : - balinder2kumar@yahoo.com|| www.asicivilsurvey.com