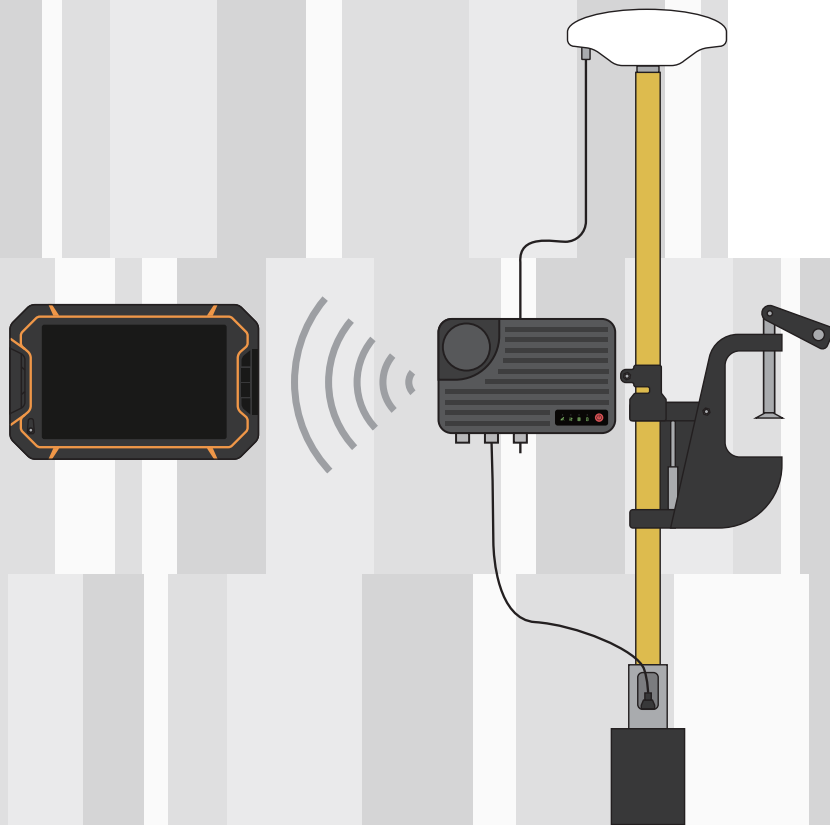




# Alpha Wi

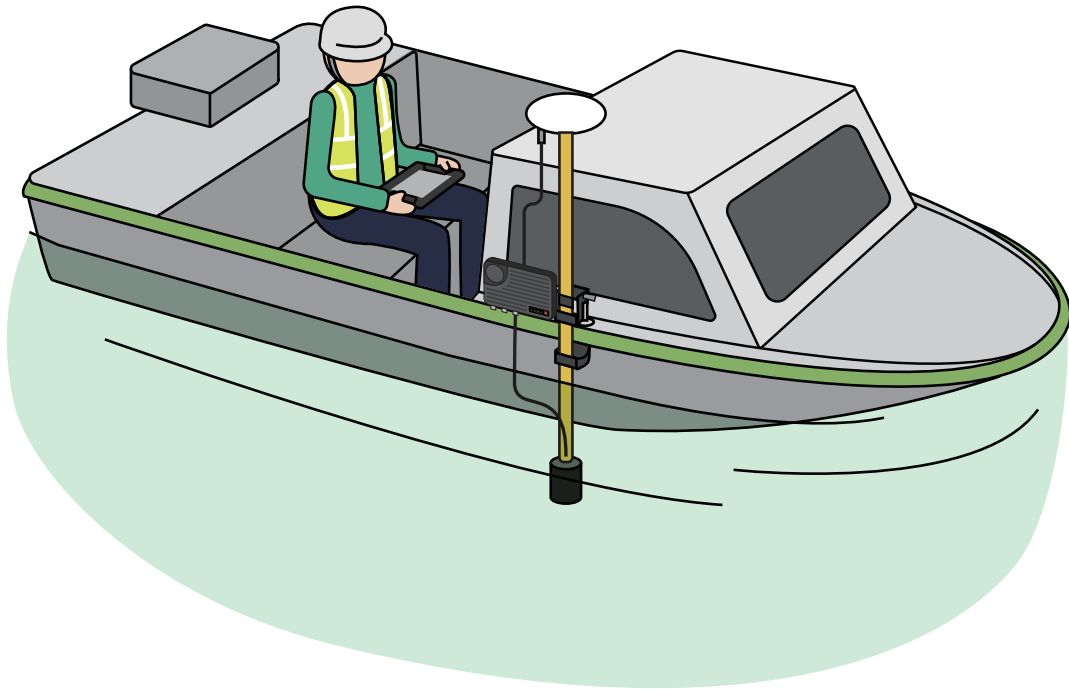
## Portable Echo Sounder

Echo Sounder + Host + Power Supply + RTK all integrated



# Alpha Wi Portable Echo Sounder

Alpha Wi portable echo sounder can survey areas with depth range up to 200m. With modular design, it can be quickly assembled and measured on site by a single person. It can be easily set and ready for work. With the standard marine fixing assembly, Alpha Wi can be easily fixed on the manned shipside or unmanned device.



Alpha Wi portable echo sounder consists of five parts: antenna, host, probe, PDA , and rod. The host has integrated radio, 4G, RTK, sonar solution, power supply system. There's wireless connection between PDA and echo sounder host.



GNSS Inside



4G



GNSS Radio



Battery Inside



OneKeyFix



Route  
planning



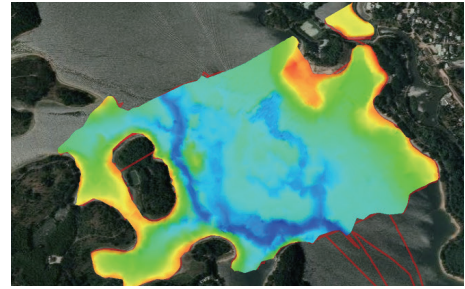
BeiDou  
PPP



IP68

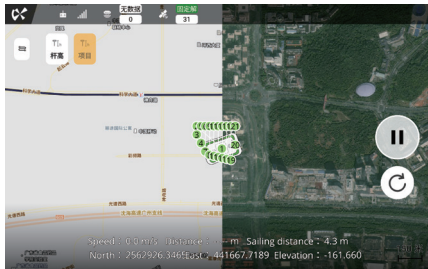
# High-precision water depth measurement

Alpha Wi echo sounder system provides resolution of 8mm water depth,  $\pm 1\text{cm} + 0.1\%H$  depth measurement accuracy, excellent hardware performance combined with unique water depth detection algorithm and advanced software to eliminate interference at multiple levels to ensure the correct water depth. It's widely used in hydrological survey, waterway, dredging, storage capacity, river survey and other scenarios

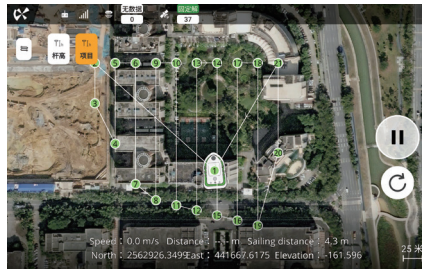


# Full functional all-in-one software

Dimap bathymetry software integrates differential system, coordinate system, project management, route planning, and data collection. Satellite base map and water depth can be superimposed. The saved point data is displayed in real time.



Variety map format can be loaded



Route planning



Easy to use

# Multi-source RTCM

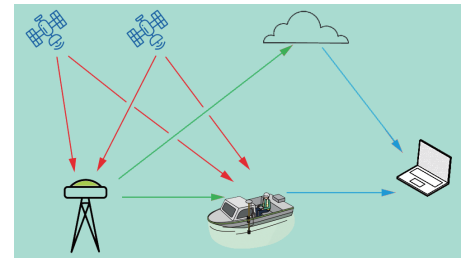
Alpha Wi supports Ntrip、Base stations, PPK post-processing, and high-precision Beidou position. It solves the problem of difficult fixation of the sea measurements and uninhabited areas, and ensure good performance for all scenarios



Receive RTCM from Base station



Beidou PPP for offshore operations



PPK post-processing

# Applicable platform



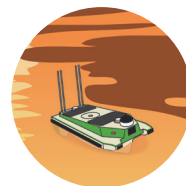
Speedboatt



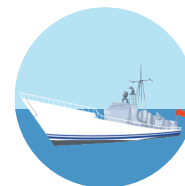
Fishing boat



Rubber boat



USV



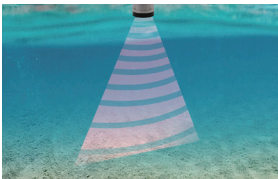
Law enforcement boat

## Configuration List



Receiver	×1
Charger	×1
Charger cable	×1
Data cable	×1
UHF	×2
Carrying Case	×1
Rod	×3
Adapter for probe	×1
Tip	×1
Clip	×1
GNSS Ant.	×1
GNSS Connect Cable	×1
PDA	×1
Manual	×1

## Description



### Sonar performance

The sounding effect is better when it works at static, pure, and deep probe draft areas. Otherwise, the data indicators will decrease.

### Deeper soundings

Supports customize lower hertz and deeper sounding indicators. The maximum support for customization is 300 meters

## Specification

	Frequency	200kHz
	Depth range	0.2~200m
	Angle	8°
<b>Echo Sounder</b>	Resolution	8mm
	Max Ping Rate	20Hz
	Max Speed	10 knots
	Soner Size	Ø70mm*105mm
	Screen	8.0Inch (1920*1200)
<b>PAD</b>	Battery	11800mAh
	Network	4G
	Processor	Cortex-A72
	RAM	4G
<b>System Configuration</b>	GNSS	GPS、GLONASS、BDS、GALILEO、QZSS
	WIFI	2.4/5GHz IEEE 802.11b/g/n/ac
	Network	4G
	Protocol	TRIMTALK450S、TRIMMARKIII、SOUTH9600、SOUTH19200、TRANSEOT、SATEL
<b>Radio</b>	Frequency	410-470MHz
	Work Mode	Tx&Rx
<b>Power</b>	Input	18W PD
	Capacity	10000mAh
	TNC	GNSS*1、4G*1、WIFI*1
	5Pin	USB and Sonar
<b>Port Indicator</b>	7Pin	ETH+RS232
	Type-C	Charge
	Indicator	Satellite、Store、RTCM、Battery
<b>Physical</b>	Size	175*130*60mm
	Weight	1200g
	Work Template	-20°C ~ +60°C
<b>Environmental</b>	Store Template	-30°C ~ +70°C
	Proof	IP68

\*The above technical parameters are for your reference. The company reserves the right to change the design and planning of the product based on the actual product.

### ADVANCED SURVEYING INSTRUMENTS (INDIA) PVT. LTD.

H-10/103, 1st Floor, Express Arcade, Netaji Subhash Place, Pitmapura, New Delhi - 110034, INDIA

+91 - 9910697973

www.robustsurveying.com

Partner Information