

SPECIFICATIONS

Measurements

Frequency

200 kHz

Beam Angle

7

Depth Resolution

0.1ft/0.01m

Accuracy

±1cm±0.1 D (0.1% of depth value)

Ping Rate

14Hz, Maximum 30Hz

Sound Velocity

1300-1700m/s, resolution is 1m/s

Depth Range

0.3-300m/900ft

Draft

0-9.9m

Gain Control

AGC and TVG, depth and gain, a double door tracking

Output data format

SOUTH, SDH-13D, DES025, INN455, ODOM etc

Physical

Environmental

-30 ~+60 non-condensing

Output Power

Up to 300 watts

Power Supply

9-15V DC, less than 25w,

110~265V AC (optional),

Dimension

35cm 29cm 14cm

Weight

7.5kg

Hardware part

Embedded system index

CPU frequency 1.6GHz

Internal memory 2G

Memory capacity 8G high-speed CF card

(supports extended storage)

I/O interface

2 USB

2 RS232

1 VGA interface

Display Panel Layout

12.1-inch color LCD

Touch screen

Embedded windows XP OS

Power ON/OFF

Interface protection

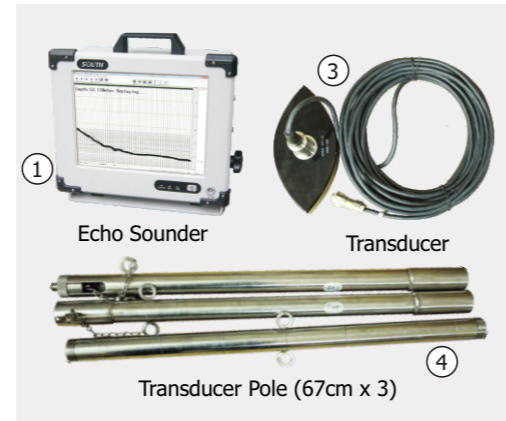
Separate Panel Overlay for

Keyboard

Mouse

Remarks

Measurement accuracy and operation range might vary due to atmospheric conditions, signal multipath, obstructions, observation time, temperature, signal geometry and number of tracked satellites. Specifications subject to change without prior notice.



STANDARD CONFIGURATION

1. Echo Sounder SDE-28S+	1pc
2. Carrying Case (for echo sounder)	1pc
3. 200KHz Transducer	1pc
4. Transducer Pole	1pc
5. Carrying Case for Transducer	1pc
6. Double RS-232 Communication Cable	1pc
7. 220V External Power Supply Cable	1pc
8. 220V External Power Supply Cable Adapter	1pc
9. 12V External Power Supply Transfer Cable	1pc
10. Keyboard (USB)	1pc
11. Mouse (USB)	1pc
12. Adapter Cable for Mouse & Keyboard	1pc
13. Pen Drive	1pc
14. SDE-28S+ Software	on board
15. PowerNav Software (with dongle key)	on board

Dealer info

SOUTH
Target your success



SDE-28S+

Dual Frequency Digital Echo Sounder



SOUTH
Target your success

Advanced Surveying Instruments (India) Pvt. Ltd.

H-10/103, 1st Floor, Express Arcade, Netaji Subhash Place, Pitampura, New Delhi - 110034, INDIA

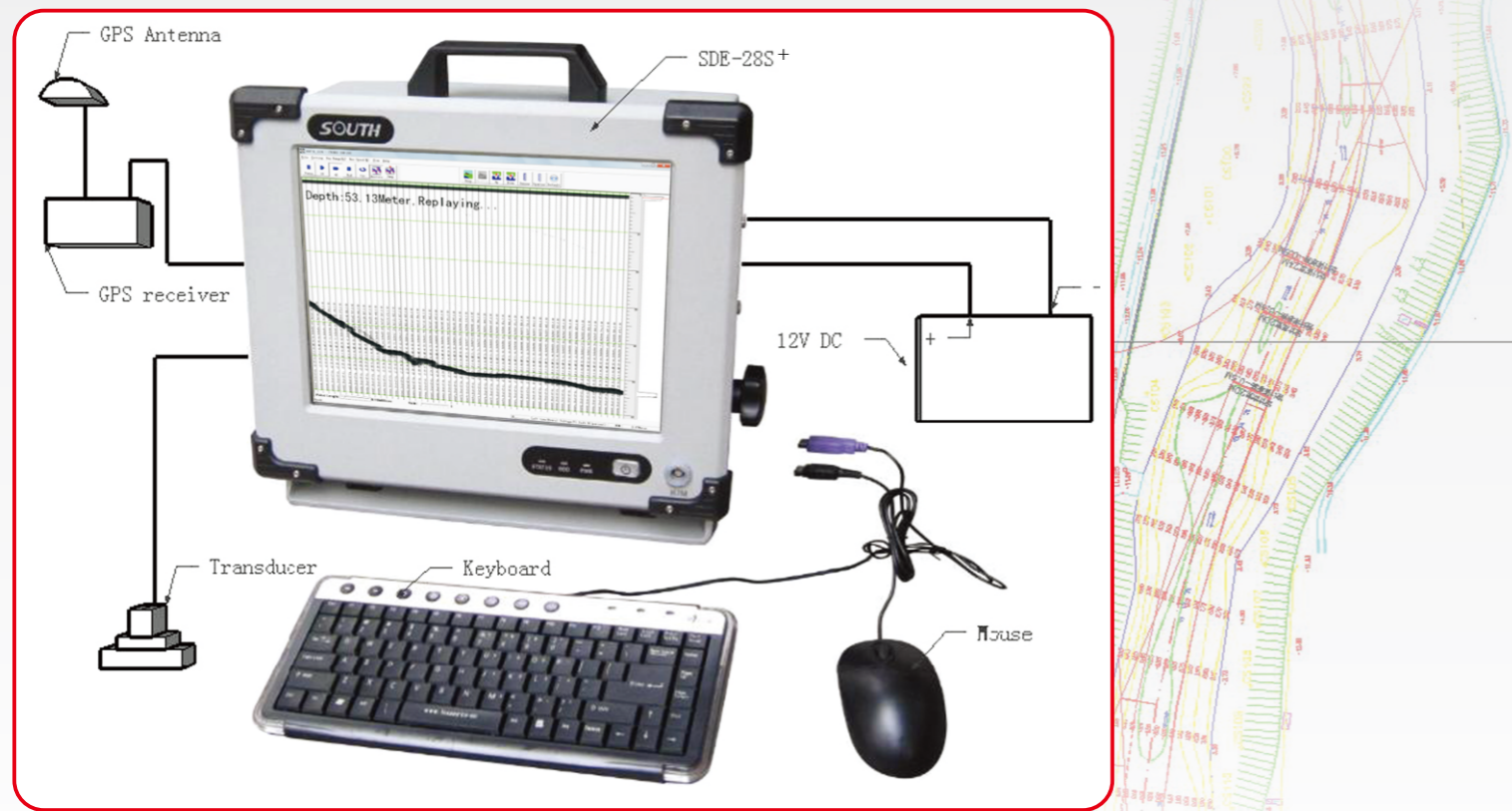
Tel: +91-11-47014143, Mobile: +91-9910697979, 9643126789

E-mail: balinder2kumar@yahoo.com, balinder2kumar@gmail.com

http://www.asisurveyinginstruments.com

WWW.SOUTHINSTRUMENT.COM

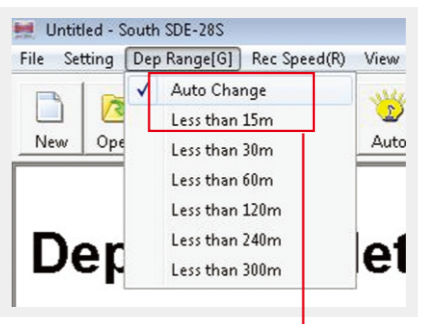
WWW.SOUTHSURVEY.COM



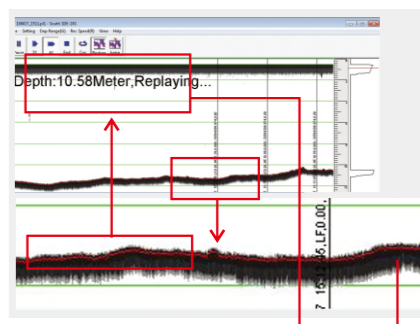
ONBOARD SOFTWARE

SDE-28S+ (for depth measurements)

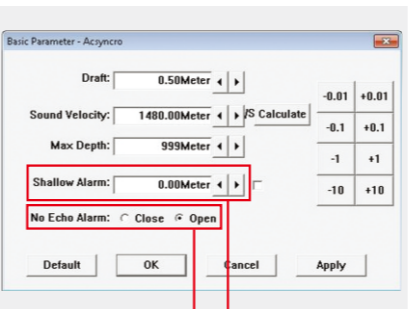
Real-time vivid display of graphic and data,
 easy approach to underwater waves
 Integrated sound velocity calculation for
 more accurate results
 Smart alarm for shallow water and “No
 echo”
 tracking to secure hydrographic operations
 Real-time display of the water depth value
 tracking lines, easy to be compared with
 underwater waves
 Automatic measurements and switch,
 Intelligent operation, easy to use
 Optional output formats and convenient



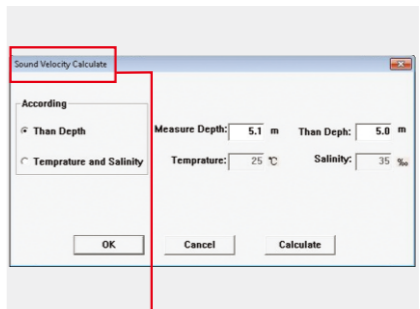
Auto Change Of Depth Range



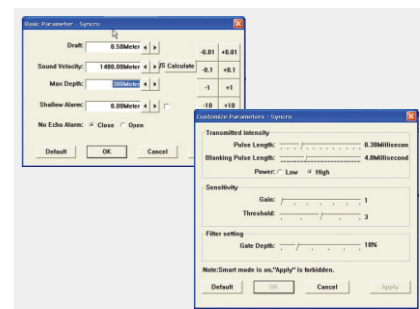
Real-time display of water depth data



“No Echo” Alarm Shallow-water Alarm



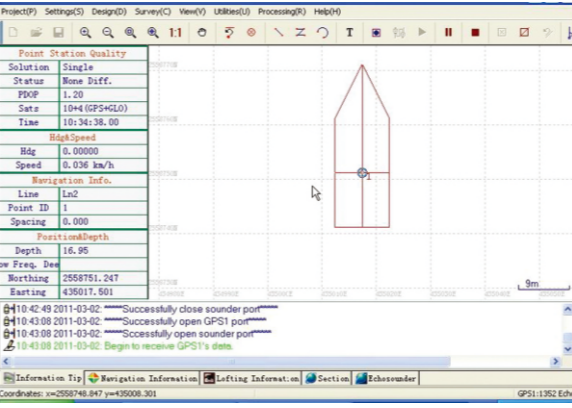
Sound Velocity Calculation



Basic and Customized Parameter Settings

KEY FEATURES

- Embedded WindowsXP operating system, user-friendly interface
- Integrated with both computer and echo sounder at industrial level, yet low power consumption
- Full aluminum housing, compact and handy, particularly designed for less-than-ideal circumstances
- High-speed DSP chip processing technology to ensure reliable waveforms and depth values
- Supports NMEA-0183 communication to gain orientation information
- High compatibility, flexible to connect different GPS devices
- Built-in flash memory upgradeable to larger capacity for diverse demands
- 12.1-inch color LCD featuring a wide viewing angle and adjustable brightness
- Automatic storage of depth data up to 24 hours, supports replay

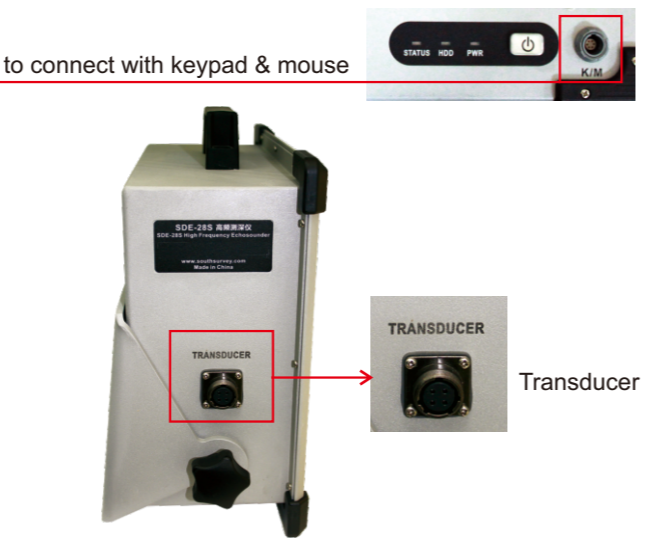
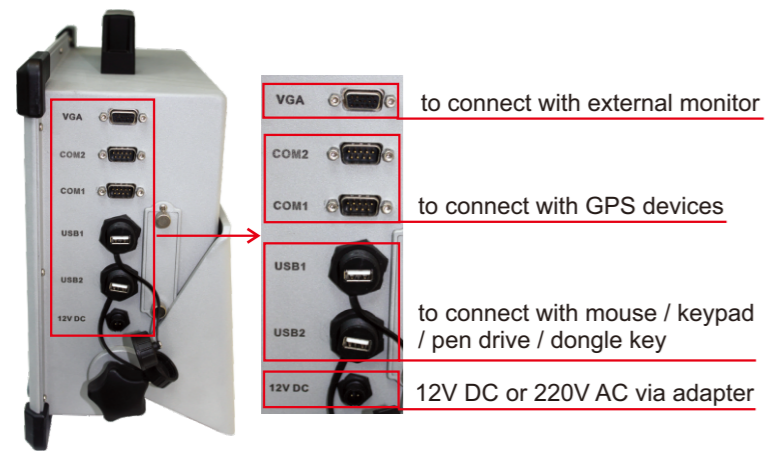


PowerNav

PowerNav (for navigation purpose)

New software kernel, faster processing and more stable
 Professional Engineering map sheet and data management, wizard-style parameter setting
 High compatibility, flexible to import graphs and data, connectible to all GPS devices and echo sounders
 Modular designed, meets diverse needs of hydrographic engineering projects
 Direct graphical navigation window box, auto voice prompt for yaw
 Intelligent scheme line model, available for fast drawing of waterway, Area, arc, etc.
 Customized formats for data export edit, easy to export To all Mapping software

USER INTERFACES



APPLICATIONS

Coastland, fairway depth measurements
 Freshwater, lake, reservoir depth measurements
 Dredging engineering measurements
 Integrated automated depth measurement (navigation measurement software required)
 Positioning navigation terminal (compatible to all GPS models with NMEA-0183 data exported) for dredging engineering projects



A Variety of Solutions for Different Hydrographic Projects
 (Note: different accuracy levels result from working with different GPS receivers.)